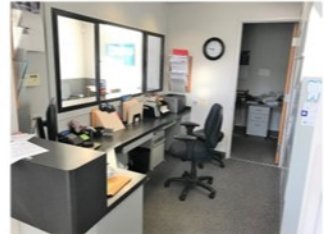
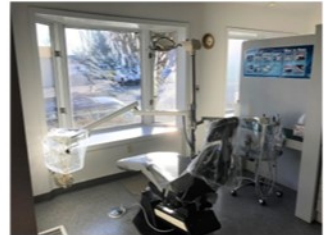
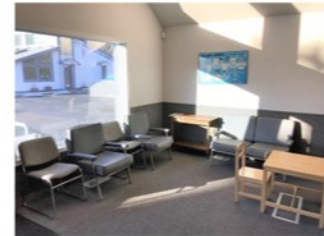




For Lease

DENTAL/MEDICAL OFFICE



1446 E Powell, Gresham, OR 97080

- 3778 Total Square Feet on Two Floors
- Well Maintained Attractive Building
- Accessible Entrance from Parking Lot
- Two HVAC Units
- Corner Lot on High Visibility East-West Traffic Corridor
- On-Site Parking 9 Designated,1 ADA
- On Street Parking on Vista and Powell
- Sign Monument of E Powell
- \$3500.00 per Month Plus NNN

Contact: **Martin Stone, CCIM; Sue O'Halloran, Principal Broker**

(503) 661-8000

Fax (503) 661-7400

www.KMOrealestate.com

Email: :Martin@kmorealestate.com : Sue@kmorealestate.com

KMO
KOHLMeyersO'HALLORAN, INC.

The information contained herein has been obtained from sources we deem reliable however, we do not guarantee it's accuracy. All information should be verified prior to lease execution.