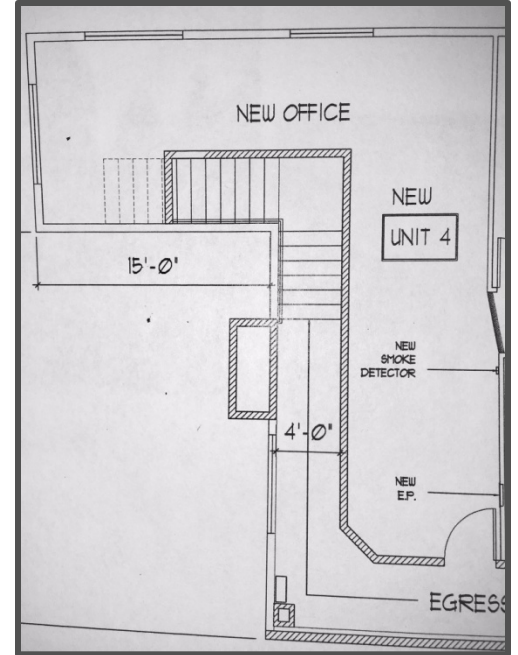


Office Space For Lease



66th Plaza

3506 SE 66th Avenue, Suite 202
Portland, OR 97206



- Private corner office plus reception area
- Many windows offer plenty of natural light
- 432 Square Feet
- Second Floor
- Parking at East and West end of building
- Convenient Central Portland location
- \$625/month Full Service
- Cross street is Powell Blvd.
- On TriMet bus line



Contact:

Sue O'Halloran, Principal Broker
Kohler Meyers O'Halloran, Inc.
503-661-8000 Office, 503-780-4814 Cell
sue@kmorealestate.com