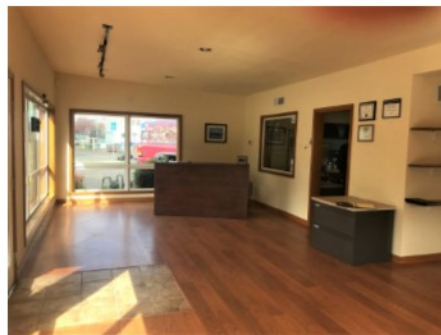




# For Sub-Lease



**825 NE Division Gresham, OR 97030**



- ♦ **1020 Square Feet of Stand-Alone Office/Retail Space.**
- ♦ **Excellent Visibility on NE Division.**
- ♦ **Light and Bright Open area at front of Space.**
- ♦ **Two Separate office areas and restroom.**
- ♦ **Assorted desks, chairs, file cabinets and one storage container may be assigned to Sub-Tenant or removed.**
- ♦ **Enclosed Fenced Outside Storage Area.**
- ♦ **3 Storage Containers in fenced area to remain with property .**
- ♦ **On-Site Parking available.**
- ♦ **Close to Restaurants, Retail, Banks and Business Services.**
- ♦ **Base Rent \$2000.00 per Month and Utilities.**
- ♦ **Current lease through December 31, 2019**

Contact: **Sue O'Halloran, Principal Broker; Martin Stone, CCIM**  
**503-661-8000**

[www.KMOrealestate.com](http://www.KMOrealestate.com)

Email: [Sue@kmorealestate.com](mailto:Sue@kmorealestate.com); [Martin@kmorealestate.com](mailto:Martin@kmorealestate.com)

