

For Sale



NORTHELEVATION ON E POWELL

\$675,000.00

1446 E Powell Blvd. Gresham, OR



SOUTH ELEVATION FROM PARKING AREA

- Attractive Stand-Alone Building, remodeled and updated.
- 3778 Square Feet on two floors.
- Former Dental Office; owner will remove equipment for Non-Dental user.
- On-Site parking with 9 spaces and 1 ADA.
- ADA ramp access to building from parking area.
- Sign monument and high visibility from busy Powell Blvd.
- Businesses in the Area include: Pape machinery, Enterprise Rental, Powell Professional Center, Dogwood Pet Hospital, Agave Azul Restaurant and Keith's Sporting Goods
- Property Zoned TR (Transition Residential)
- Taxes \$6554.57, 2017
- Also available for lease at \$3500.00 per mo. NNN.

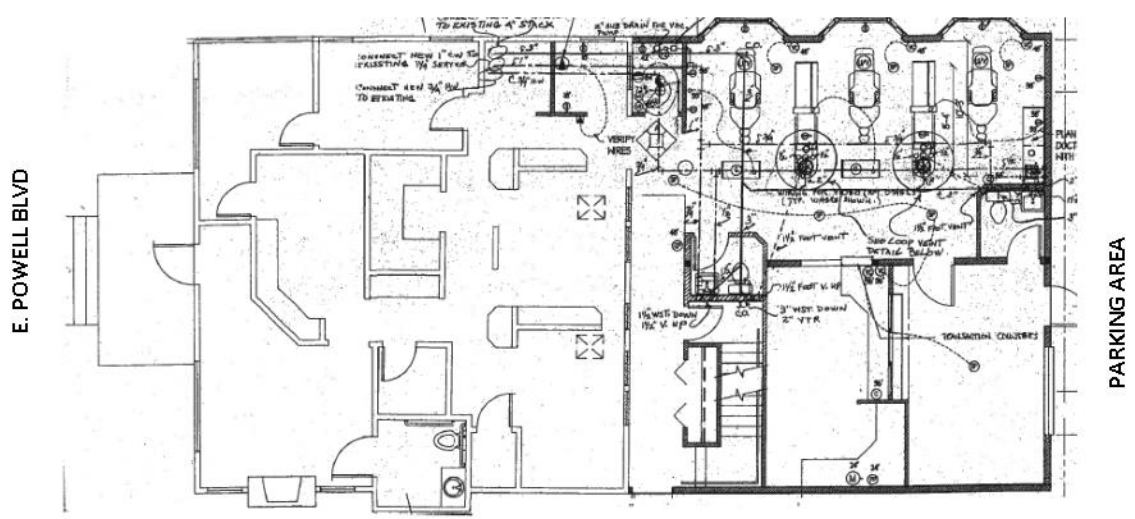
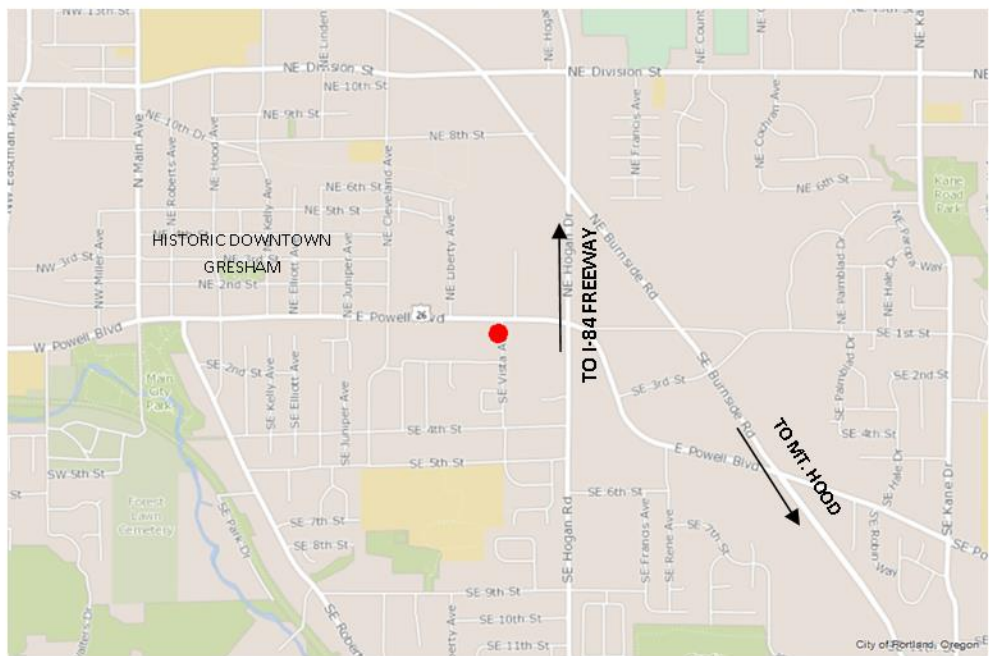
Contact: **Martin Stone, CCIM; Sue O'Halloran, Principal Broker**
(503) 661-8000 Fax (503) 661-7400

www.KMO-Real-Estate.com

Email: Martin@KMO-Real-Estate.com; Sue@KMO-Real-Estate.com

KMO
KOHLEMEYERS O'HALLORAN, INC.

The information contained herein has been obtained from sources we deem reliable however, we do not guarantee its accuracy. All information should be verified prior to lease execution.



E. POWELL BLVD

PARKING AREA