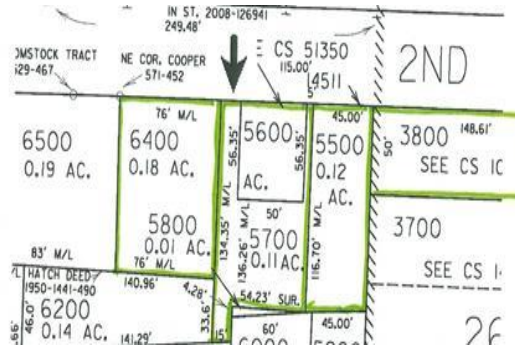


For Sale

Development Site 28,140 Square Feet
Located in Gresham's Central City



Offered at \$422,100



NE 2nd St. between NE Hogan Ave. and NE Kelly Ave Gresham, OR 97030

- 5 separate parcels sold together.
- Entire site 28,140 square feet.
- Prime location across from the Gresham Arts Plaza and Fountains.
- Part of Gresham's Historic Downtown Plan District.
- Mixed use commercial/residential.
- Shopping, restaurants, banks, post office and Regional Library within 4 block radius of site.

Zoning DCC: This Sub-District is intended to preserve the small scale character on Main Avenue while encouraging an active, engaging mix of old and new. Permitted uses would include clinics, retail, business services, office, attached dwellings, live/work.

Sue O'Halloran, Principal Broker, Darren O'Halloran, Broker
Kohler Meyers O'Halloran, Inc.
15 NE 3rd St Gresham, OR 97030
www.kmorealestate.com
503-703-8168 cell, Darren
503-661-8000 office