



# **For Lease**

## **BURNSIDE PLAZA**

### **Office Spaces Available**

**1584 NE 8th St, Gresham, OR 97030**



#### **Attractive Gresham Building at NE 8th and Burnside Dental/Medical/Office Use**

- **Suite 208, 3428 rsf - \$7,141.66 month modified gross**  
**Previous dental clinic fully equipped with reception/waiting area, private office, file room, 6 dental chairs, sterilization, lab, x-ray room, kitchenette, & 2 restrooms**  
**Suite can be occupied as dental/medical use or renovated into standard office space**
- **Suite 202, 992 rsf - \$1612 month modified gross. Ready for tenant build-out**
- **Suite 204, 999 rsf - \$1623 month modified gross. Ready for tenant build-out**
- **Second floor offices, elevator served, building is ADA accessible**
- **All Utilities Included**
- **Security service & secured building entrance**
- **Sprinklered building**
- **On site Parking; next to Max Cleveland Station**
- **Served by Comcast & Zipl**

#### **Contact:**

**Sue O'Halloran, Principal Broker**  
**503-661-8000 Office**  
**Sue@kmorealestate.com**

**Colleen Hildebrand, Broker**  
**971-288-9963 Cell**  
**Colleen@kmorealestate.com**

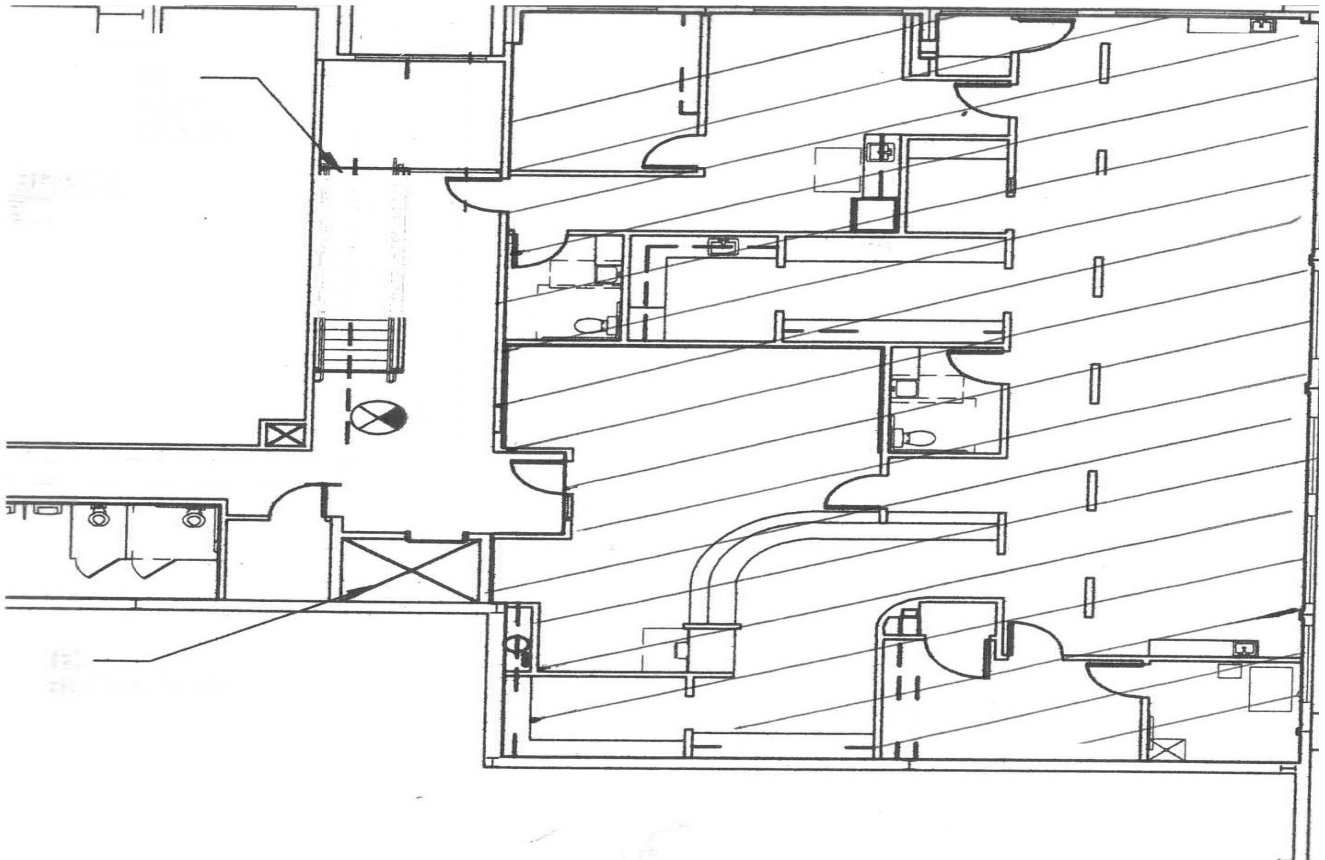
**www.kmorealestate.com**  
**Kohler Meyers O'Halloran, Inc.**

#### **Building Tenants:**

**State Farm Insurance**  
**Berkshire Hathaway Home Services**  
**Edward Jones Investments**  
**Sun Rise Salon**  
**Pacific Driver Education**  
**Core Fitness & Yoga**  
**Revolution Parkour**



- Suite 208 Available



- Suite 202 & 204 Available Ready for Tenant Build-Out

