

For Lease

The Halsey Building

Office Space

Suite 104 - 1480SF usable

23424 NE Halsey St. Wood Village, OR 97030



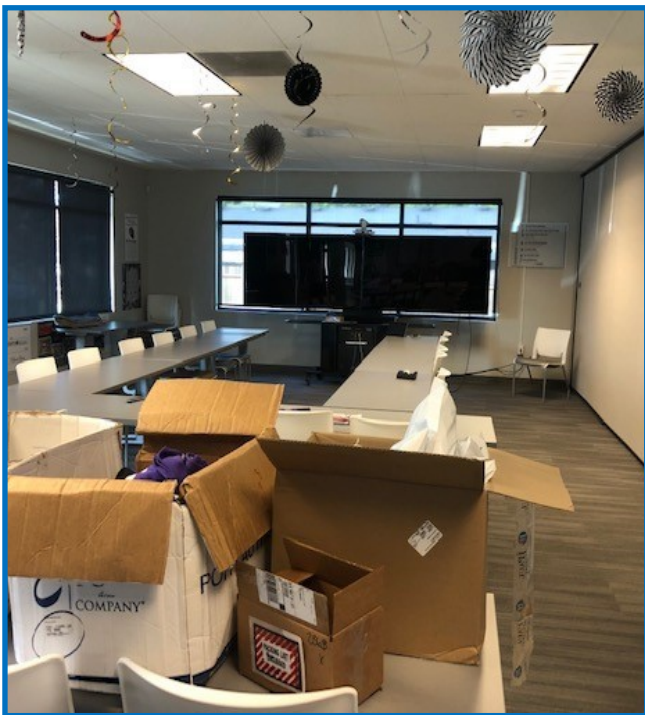
FOR INFORMATION CONTACT:

Sue O'Halloran, Principal Broker /Corinne O'Halloran, Broker/Property Manager 503-661-8000 Office

Sue@KmoRealEstate.com; Corinne@KmoRealEstate.com

503-819-2337 Corinne Cell





The Halsey Building

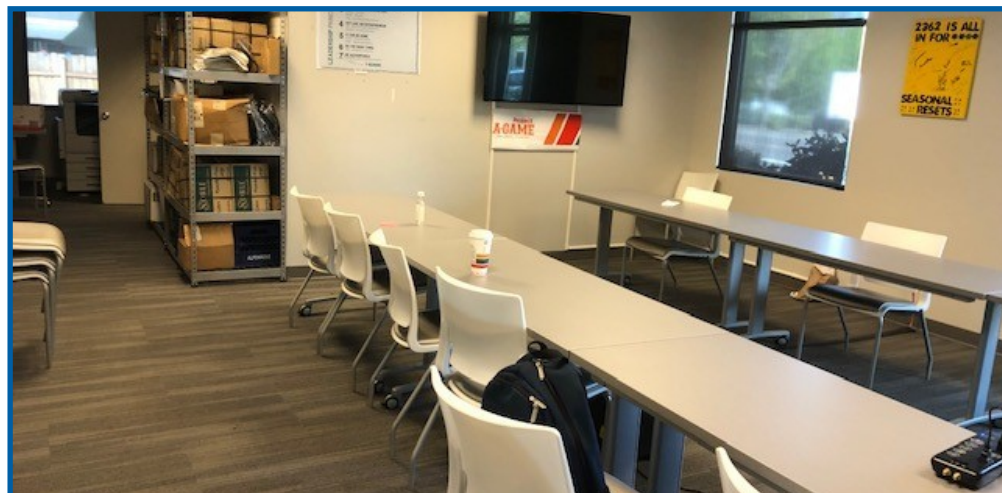
Suite 104

23424 NE Halsey St.

Wood Village, OR 97060

Property Overview

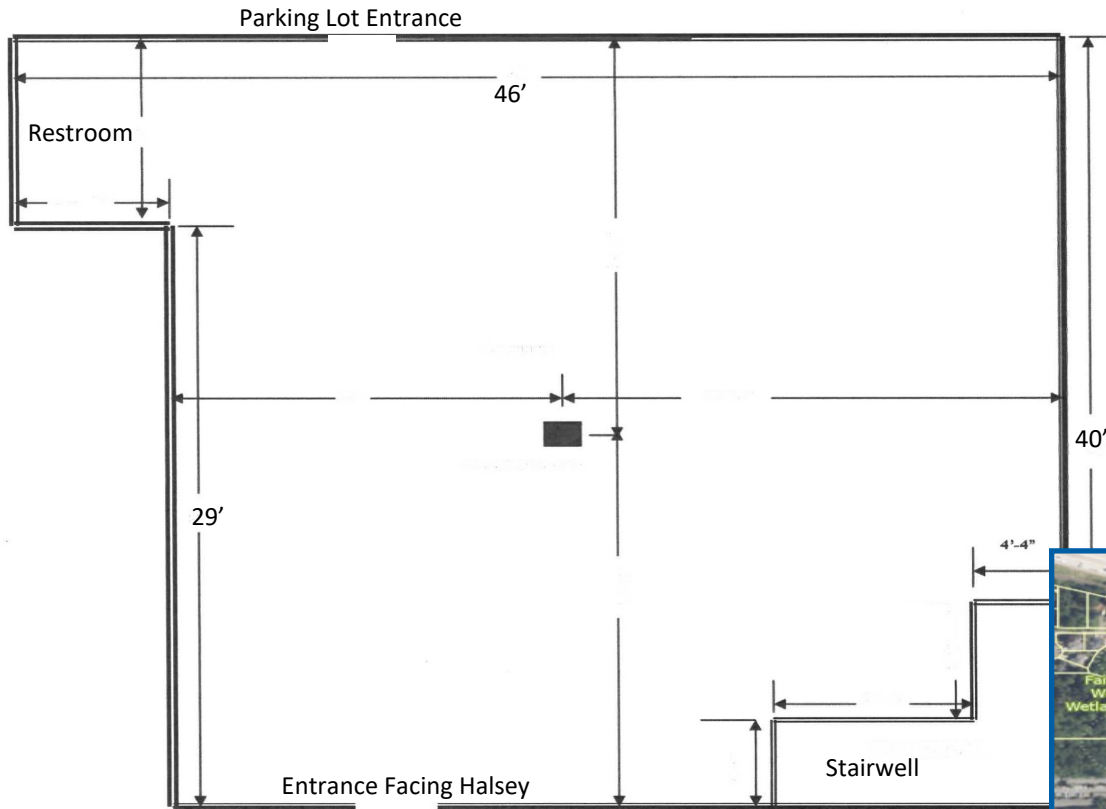
BUILDING SQUARE FEET	11,980
YEAR BUILT	2009
AVAILABLE SPACE	1480 SF
RATE	\$2467/month
NNN	\$1105.24
	All utilities included
TENANT IMPROVEMENT ALLOWANCE	Negotiable
MINIMUM TERM	3 years
PARKING	Lot Parking at rear + Minimal Street Parking
SPACE DETAILS	*Doors at Front & Rear *Private Restroom *Many Windows *Carpet



This information supplied herein is from sources we deem reliable. It is provided without any representation, warranty, or guarantee, expressed or implied as to its accuracy. Prospective Buyer or Tenant should conduct an independent investigation of all matters deemed to be material, including, but not limited to, statements of income and expenses.

Office Space for Lease—Suite 104

23424 NE Halsey St. Wood Village, OR 97060



This information supplied herein is from sources we deem reliable. It is provided without any representation, warranty, or guarantee, expressed or implied as to its accuracy. Prospective Buyer or Tenant should conduct an independent investigation of all matters deemed to be material, including, but not limited to, statements of income and expenses.