

**LEASE**

**800 SE 181st Gresham**

**OFFICE**



**FOR INFORMATION CONTACT:**

**Sue O'Halloran, Principal Broker; Martin Stone, CCIM**

**503-661-8000**

**Email: [Sue@KmoRealEstate.com](mailto:Sue@KmoRealEstate.com); [Martin@KmoRealEstate.com](mailto:Martin@KmoRealEstate.com)**







# 800 SE 181ST Portland

## OFFICE LEASE

### Property Overview

BUILDING SQUARE FEET	3780 SF
YEAR BUILT	1986 remodeled
AVAILABLE SPACE	3780 SF
RATE	\$ 4,000.00 Per Month
NNN	\$ 3.35 PSF
TENANT IMPROVEMENT ALLOWANCE	negotiable
MINIMUM TERM	5 Years
PARKING	On-Site front and back
BUILDING ACCESS	ADA Accessible
AMENITIES	Current build-out for medical use, ADA restrooms, reception and waiting area, multiple offices with kitchenette/lab, break room and storage area. Fully fenced parking area with remote entry gate, sign monument on 181st.

### IN THE AREA

James F. Rourke Jr. Attny.,  
Comfort Dentistry,  
Rockwood Preparatory  
Academy

This information supplied herein is from sources we deem reliable. It is provided without any representation, warranty, or guarantee, expressed or implied as to its accuracy. Prospective Buyer or Tenant should conduct an independent investigation of all matters deemed to be material, including, but not limited to, statements of income and expenses.



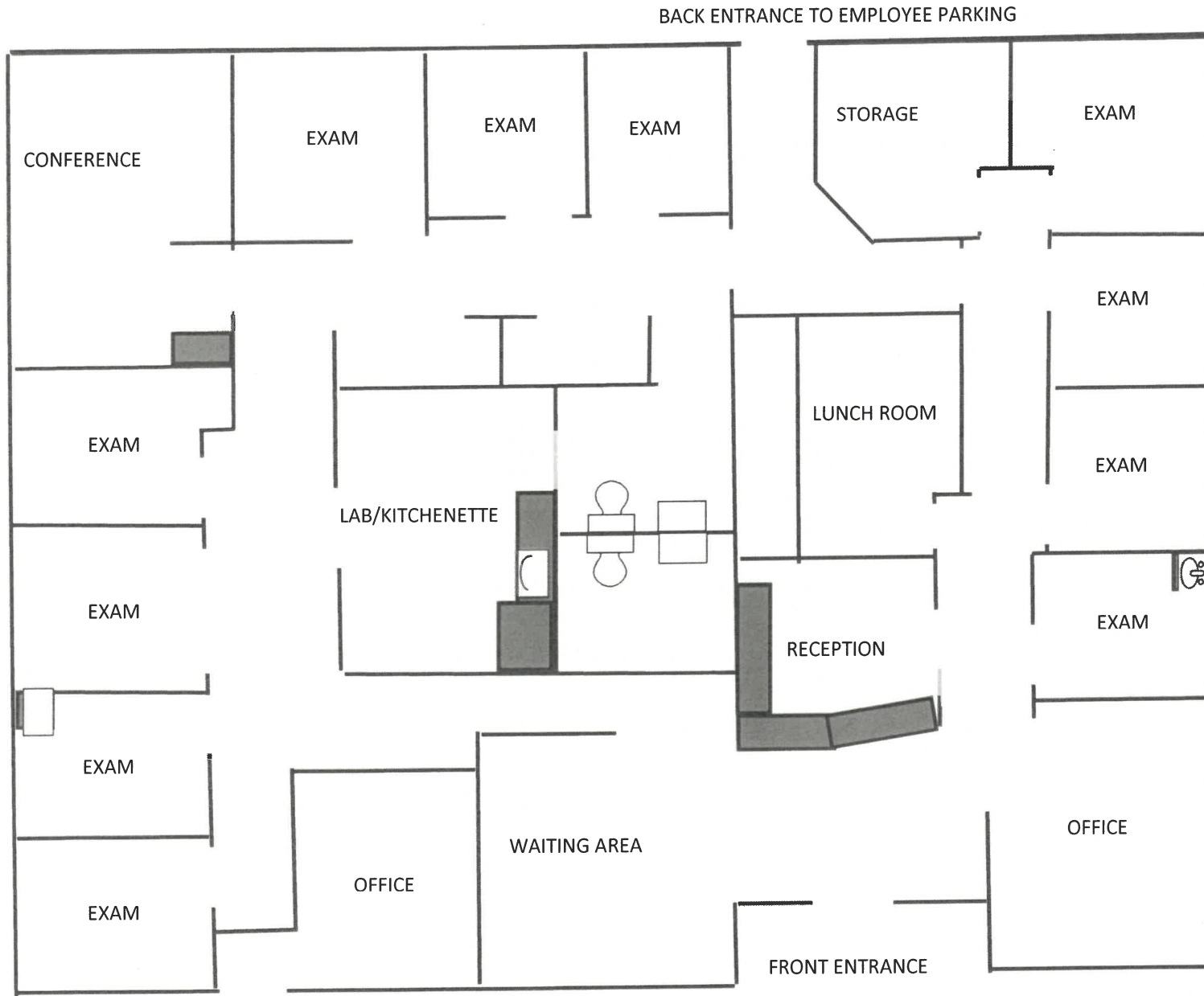
LEASE

800 SE 181 ST

Office



This information supplied herein is from sources we deem reliable. It is provided without any representation, warranty, or guarantee, expressed or implied as to its accuracy. Prospective Buyer or Tenant should conduct an independent investigation of all matters deemed to be material, including, but not limited to, statements of income and expenses.



This information supplied herein is from sources we deem reliable. It is provided without any representation, warranty, or guarantee, expressed or implied as to its accuracy. Prospective Buyer or Tenant should conduct an independent investigation of all matters deemed to be material, including, but not limited to, statements of income and expenses.