

FOR LEASE

LIDER BUILDING

Retail/Office

1738-1740 E Powell, Gresham, OR



FOR INFORMATION CONTACT:

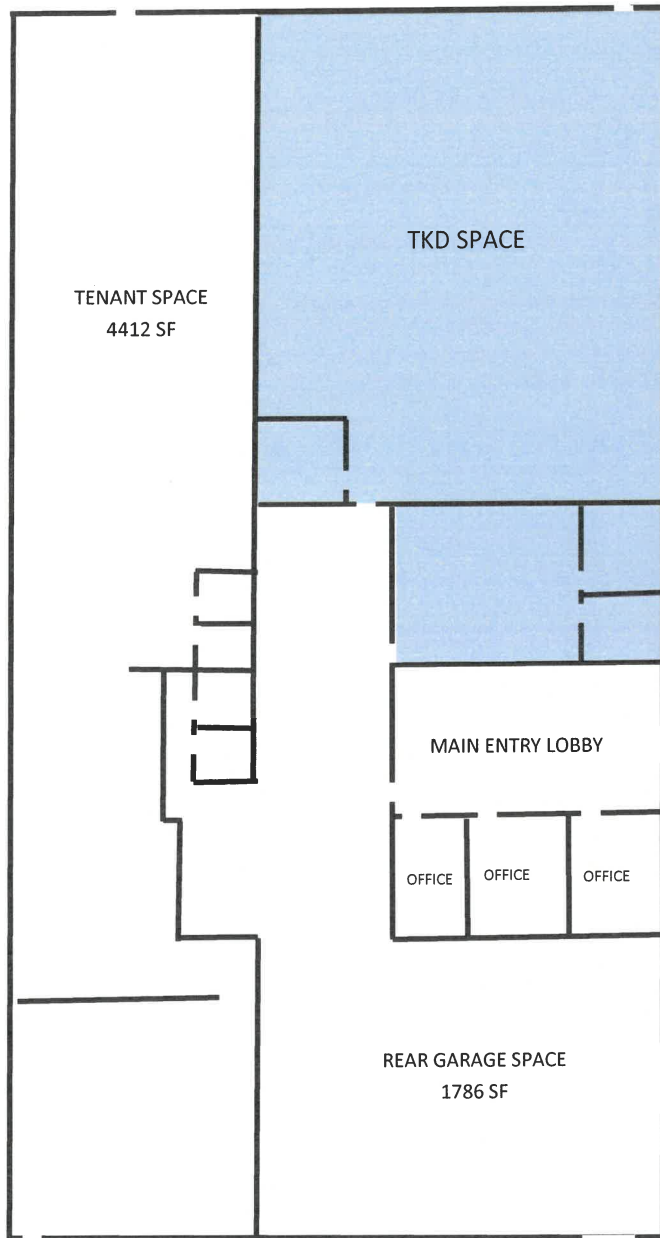
Sue O'Halloran, Principal Broker; Martin Stone, CCIM

503-661-8000

Email: Sue@KmoRealEstate.com; Martin@KmoRealEstate.com

KMO
KOHLERMEYERSO'HALLORAN, INC.

FRONT FACING E POWELL



LIDER BUILDING

1738-1740 E Powell Blvd. Gresham, OR

Property Overview

| | |
|------------------------------|-----------------------------|
| CLASS A OFFICE SPACE | Available NOW |
| BUILDING SQUARE FEET | 12,000 SF |
| YEAR BUILT | 1980 |
| AVAILABLE SPACE | Multiple spaces |
| RATE | Negotiable |
| NNN | \$6.50 PSF |
| TENANT IMPROVEMENT ALLOWANCE | Negotiable |
| MINIMUM TERM | 5 years |
| PARKING | On-Site |
| BUILDING ACCESS | ADA Accessible |
| CURRENT TENANTS | U.S. World Class Taekwondo, |

LOCATION
HIGH VISIBILITY ON BUSY
POWELL CORRIDOR TO
SANDY, MT. HOOD AND
EASY ACCESS TO I-84

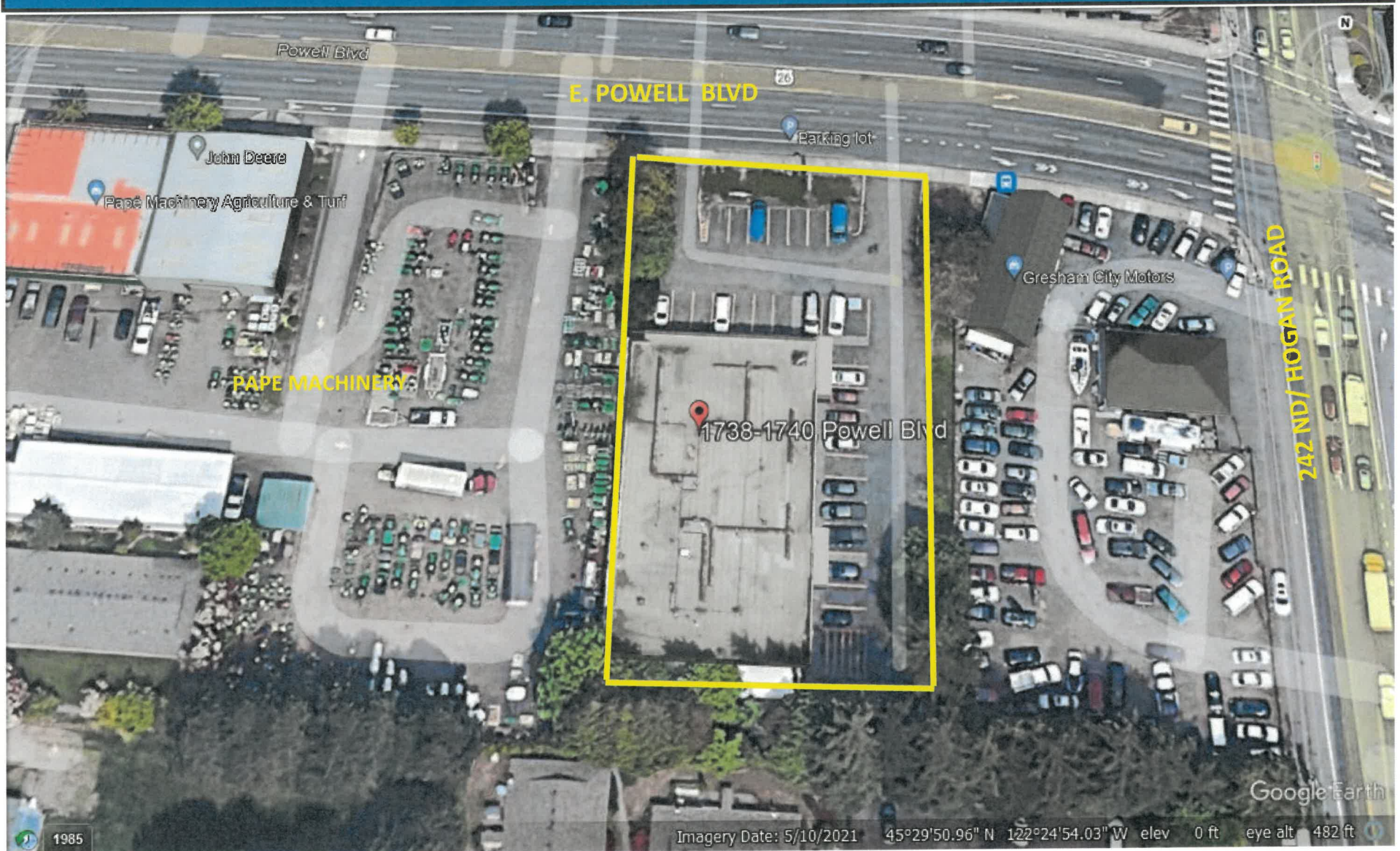
This information supplied herein is from sources we deem reliable. It is provided without any representation, warranty, or guarantee, expressed or implied as to its accuracy. Prospective Buyer or Tenant should conduct an independent investigation of all matters deemed to be material, including, but not limited to, statements of income and expenses.

LEASE

LIDER BUILDING

RETAIL/OFFICE

1738-1740 E Powell Blvd. Gresham



This information supplied herein is from sources we deem reliable. It is provided without any representation, warranty, or guarantee, expressed or implied as to its accuracy. Prospective Buyer or Tenant should conduct an independent investigation of all matters deemed to be material, including, but not limited to, statements of income and expenses.