

FOR LEASE

LIDER BUILDING

1738-1740 E Powell, Gresham, OR

Retail/Office



FOR INFORMATION CONTACT:

Sue O'Halloran, Principal Broker; Martin Stone, CCIM

Email: Sue@KmoRealEstate.com; Martin@KmoRealEstate.com

503-661-8000



FRONT FACING E POWELL



LIDER BUILDING

1738-1740 E Powell Blvd. Gresham, OR

Property Overview

CLASS A OFFICE SPACE	Available NOW
BUILDING SQUARE FEET	12,000 SF
YEAR BUILT	1980
AVAILABLE SPACE ste. 1738	2374SF \$3550.00 NNN
REMAINING SPACE	324-1786 SF NEGOTIABLE
NNN	\$6.50 PSF
TENANT IMPROVEMENT ALLOWANCE	Negotiable
MINIMUM TERM	5 years
PARKING	On-Site
BUILDING ACCESS	ADA Accessible
CURRENT TENANTS	U.S. World Class Taekwondo,
LOCATION	HIGH VISIBILITY ON BUSY POWELL CORRIDOR TO SANDY, MT. HOOD AND EASY ACCESS TO I-84

This information supplied herein is from sources we deem reliable. It is provided without any representation, warranty, or guarantee, expressed or implied as to its accuracy. Prospective Buyer or Tenant should conduct an independent investigation of all matters deemed to be material, including, but not limited to, statements of income and expenses.

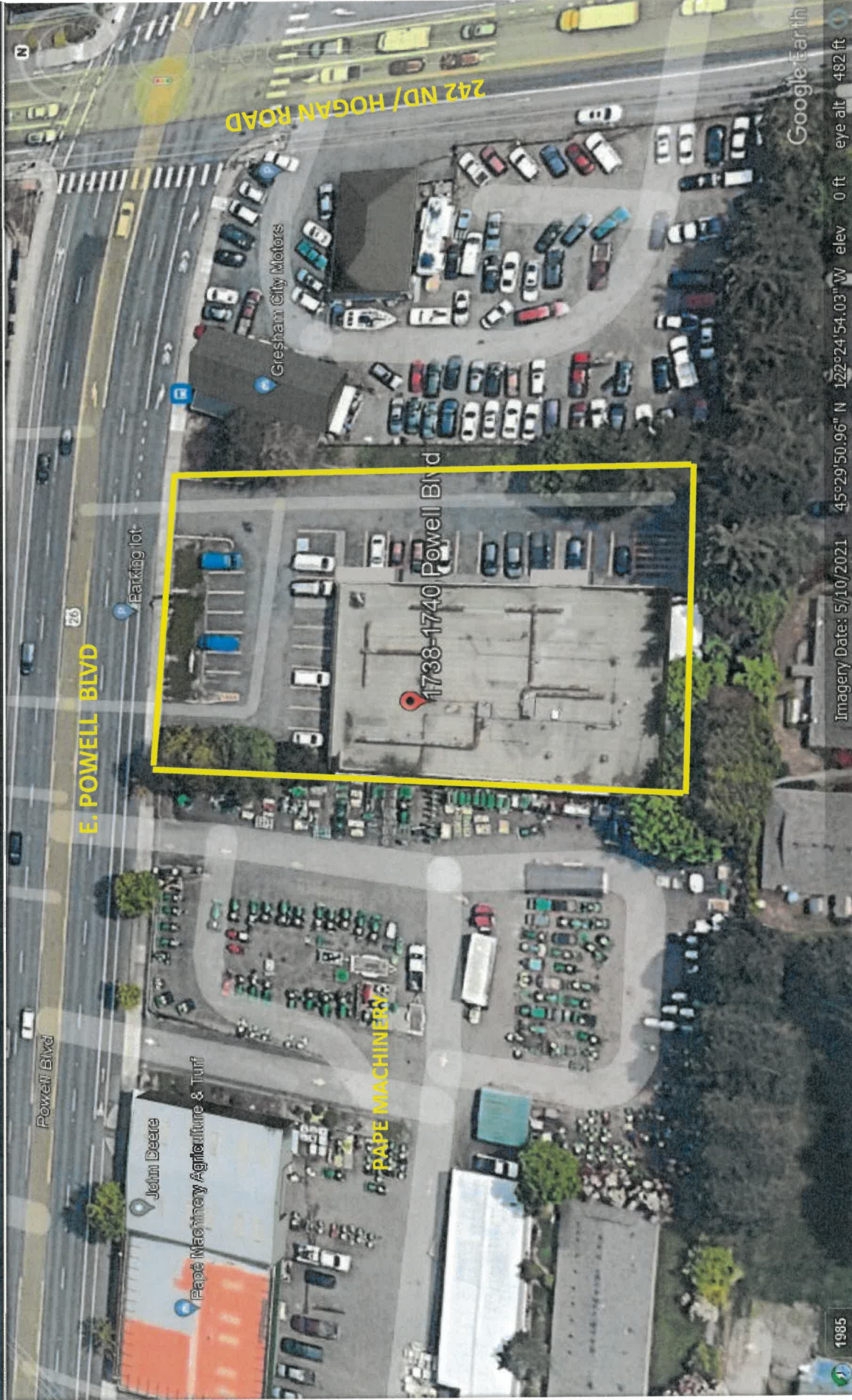


LEASE

LIDER BUILDING

RETAIL/OFFICE

1738-1740 E Powell Blvd. Gresham



This information supplied herein is from sources we deem reliable. It is provided without any representation, warranty, or guarantee, expressed or implied as to its accuracy. Prospective Buyer or Tenant should conduct an independent investigation of all matters deemed to be material, including, but not limited to, statements of income and expenses.

