



For Lease

BURNSIDE PLAZA

Office Spaces Available

1584 NE 8th St, Gresham, OR 97030



Attractive Gresham Building at NE 8th and Burnside Dental/Medical/Office Use

- **Suite 1592, 1581 rsf - \$3,360.00 month modified gross with 1 private office and 1 conference room**
- **Suite 208, 3428 rsf - \$7,141.66 month modified gross**
Previous dental clinic fully equipped with reception/waiting area, private office, file room, 6 dental chairs, sterilization, lab, x-ray room, kitchenette, & 2 restrooms
Suite can be occupied as dental/medical use or renovated into standard office space
- **Suite 204, 999 rsf - \$1623 month modified gross. Ready for tenant build-out**
- **Second floor offices, elevator served, building is ADA accessible**
- **All Utilities Included**
- **Security service & secured building entrance**
- **Sprinklered building**
- **On site Parking; next to Max Cleveland Station**

Contact:

Sue O'Halloran, Principal Broker
503-661-8000 Office
Sue@kmorealestate.com

Colleen Hildebrand, Broker
971-288-9963 Cell
Colleen@kmorealestate.com

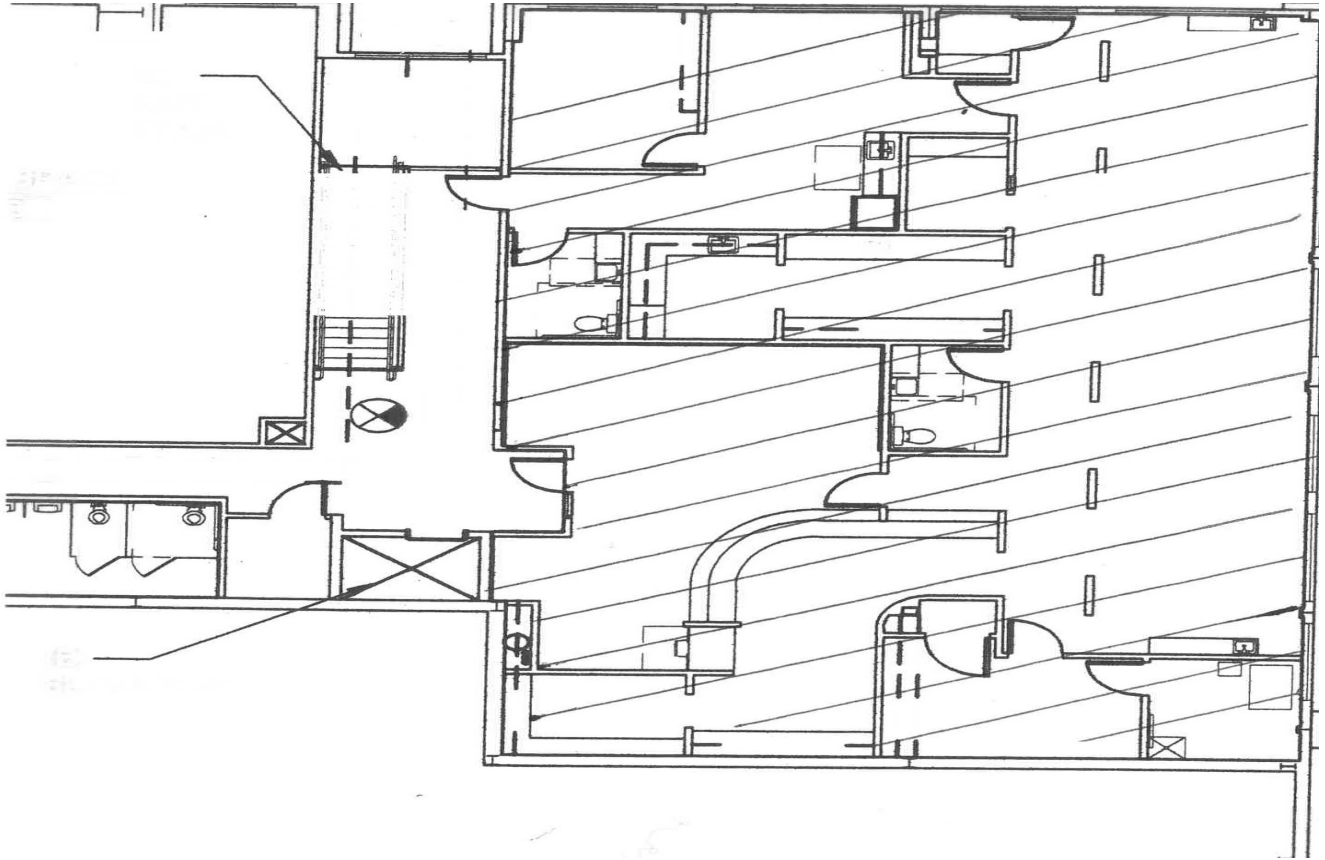
www.kmorealestate.com
Kohler Meyers O'Halloran, Inc.

Building Tenants:

Berkshire Hathaway Home Services
Edward Jones Investments
Sun Rise Salon
Pacific Driver Education
Core Fitness & Yoga
Revolution Parkour
New Pattern Counseling
Torgerson Painting



- Suite 208 Available



- Suite 202 & 204 Available Ready for Tenant Build-Out

