

FOR LEASE

SHATTUCK HOUSE

Retail/Office

343 North Main Avenue, Gresham, OR



FOR INFORMATION CONTACT:

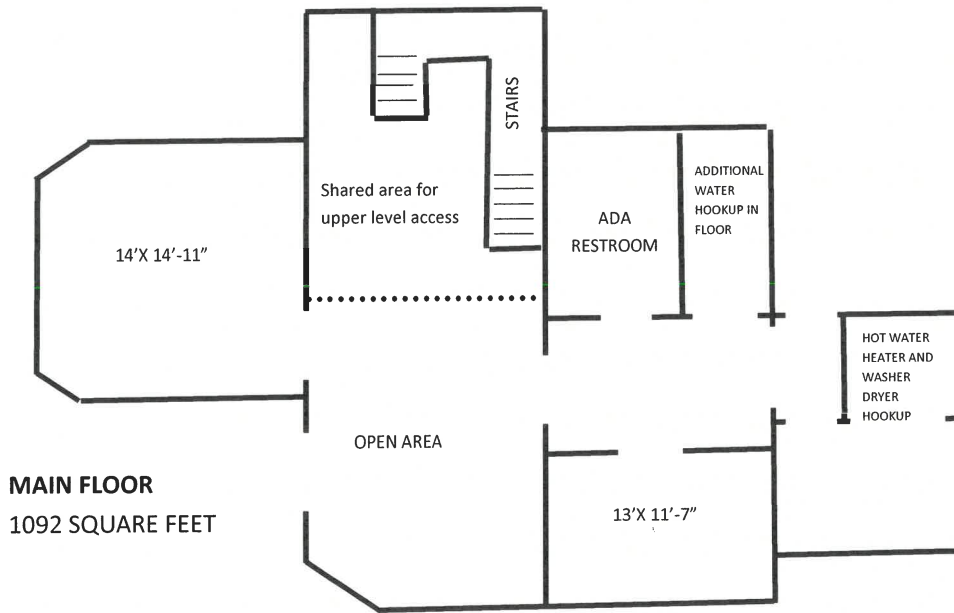
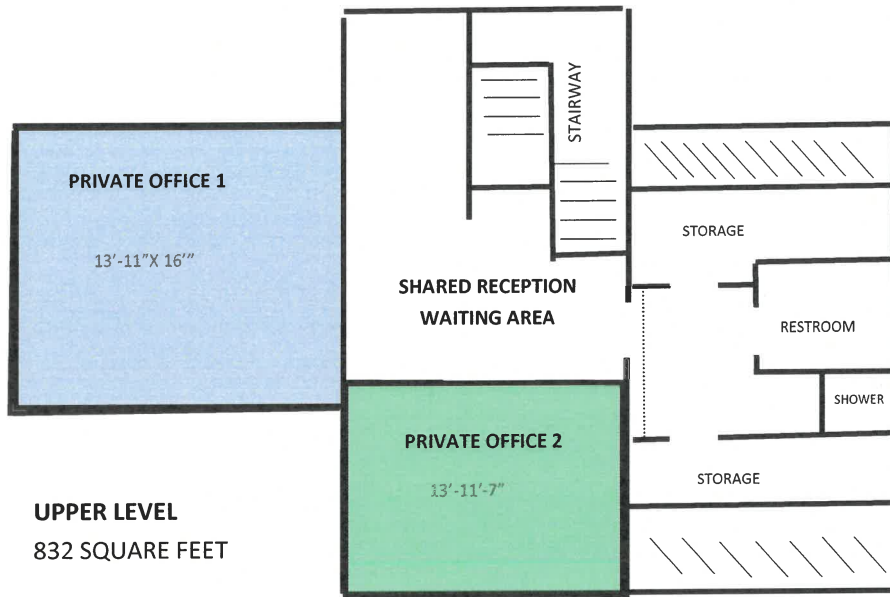
Sue O'Halloran, Principal Broker; Martin Stone, CCIM

Email: Sue@KmoRealEstate.com; Martin@KmoRealEstate.com

503-661-8000

www.KmoRealEstate.com

KMO
KOHLERMeyersO'HALLORAN, INC.



SHATTUCK HOUSE

343 North Main Avenue. Gresham, OR

Property Overview

OFFICE RETAIL

BUILDING SQUARE FEET	1924 SF
Main Level	1092 SF \$2,000.00 plus utilities
Upper Level	
Private Office 1	\$850.00 plus utilities
Private Office 2	\$800.00 plus utilities
Upper level offices include reception area	
Entire Building	1942 SF \$3500.00 per month plus utilities

MINIMUM TERM

5 years

PARKING

On-Street

BUILDING ACCESS

ADA Accessible, Main Level

LOCATION

In the heart of Historic Downtown Gresham on Main Avenue. Surrounded by restaurants and business services.

BUILDING FEATURES

Charming restored Victorian with several architectural features. Can be leased complete or divided to accommodate tenant needs

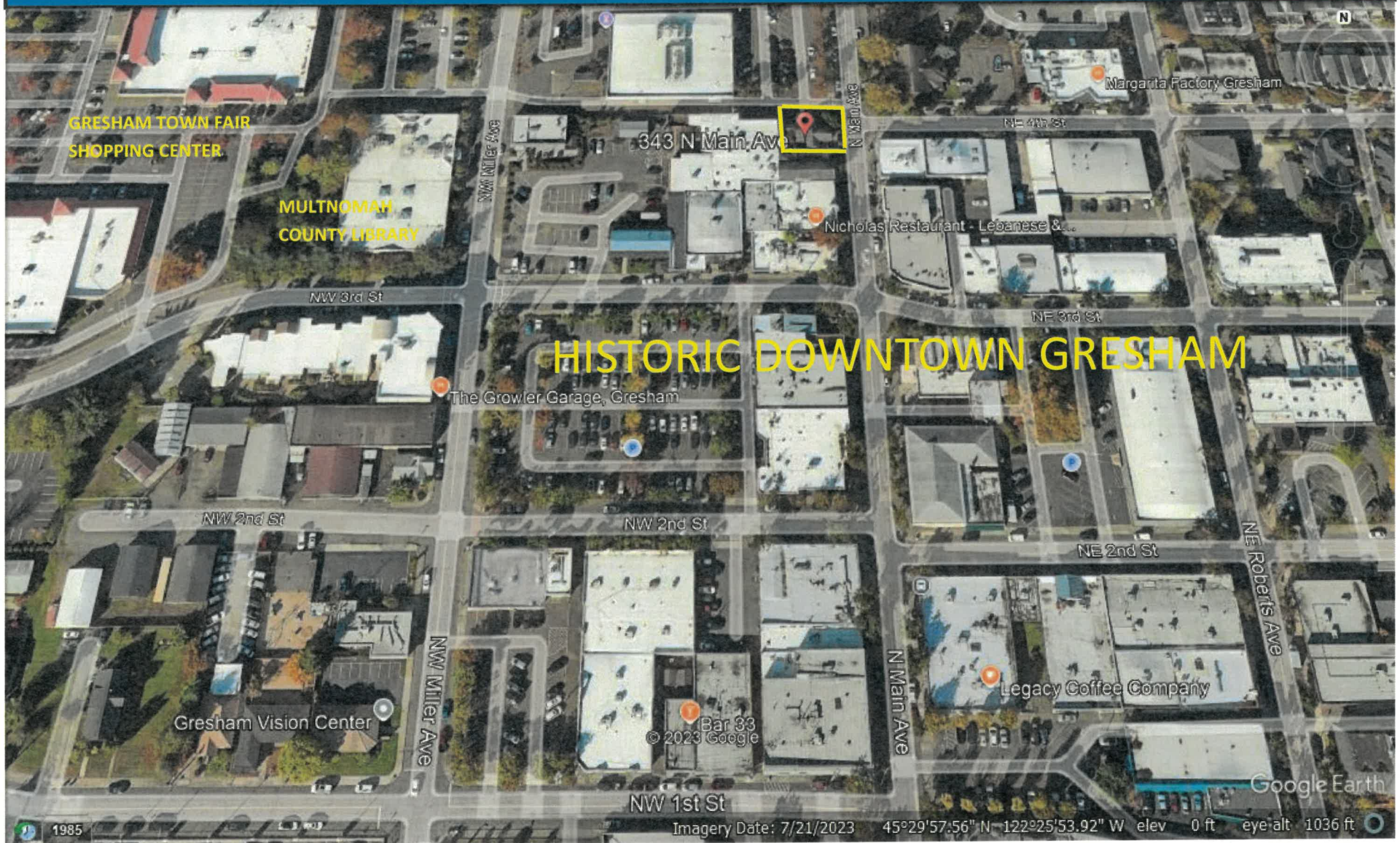
This information supplied herein is from sources we deem reliable. It is provided without any representation, warranty, or guarantee, expressed or implied as to its accuracy. Prospective Buyer or Tenant should conduct an independent investigation of all matters deemed to be material, including, but not limited to, statements of income and expenses.

LEASE

SHATTUCK HOUSE

OFFICE/RETAIL

343 North Main Avenue. Gresham



This information supplied herein is from sources we deem reliable. It is provided without any representation, warranty, or guarantee, expressed or implied as to its accuracy. Prospective Buyer or Tenant should conduct an independent investigation of all matters deemed to be material, including, but not limited to, statements of income and expenses.

