

FOR LEASE

SHATTUCK HOUSE

Retail/Office

343 North Main Avenue, Gresham, OR



FOR INFORMATION CONTACT:

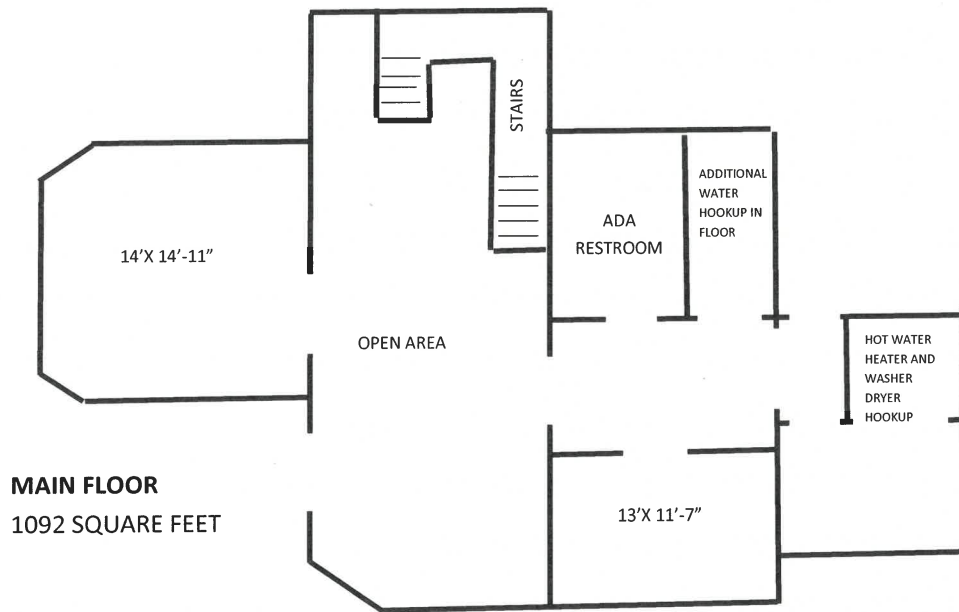
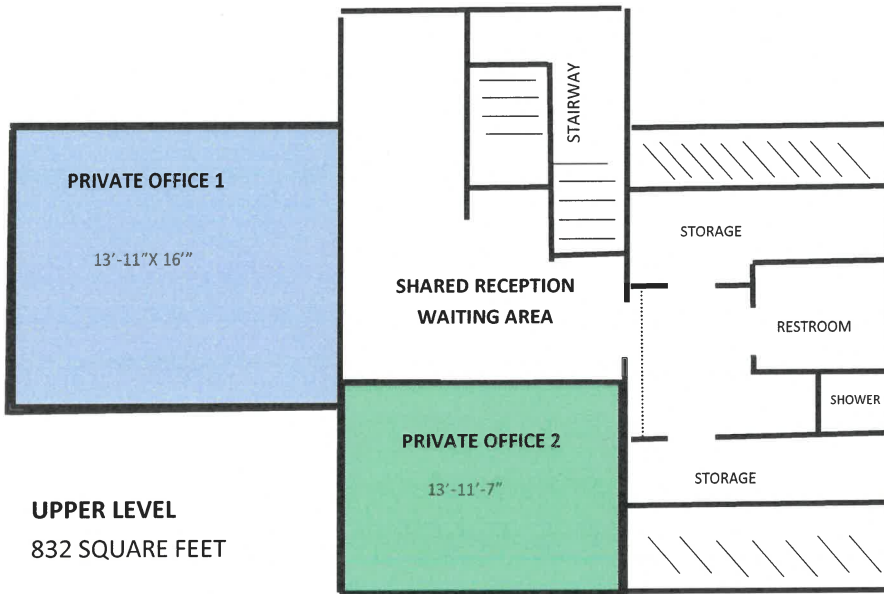
Sue O'Halloran, Principal Broker; Martin Stone, CCIM

Email: Sue@KmoRealEstate.com; Martin@KmoRealEstate.com

503-661-8000

www.KmoRealEstate.com

KMO
KOHLERMEYERSO'HALLORAN, INC.



SHATTUCK HOUSE

343 North Main Avenue. Gresham, OR

Property Overview

OFFICE RETAIL

BUILDING SQUARE FEET	1924 SF
Main Level	1092 SF
Upper Level	832 SF
ASKING RATE	\$ 20.00 PSF
NNN	\$ 4.50 PSF

SECOND FLOOR OPTIONS

Private office 1	\$850.00 PER MO.
Private office 2	\$800.00 PER MO.

MINIMUM TERM 5 years

PARKING On-Street

BUILDING ACCESS ADA Accessible, Main Level

LOCATION In the heart of Historic Downtown Gresham on Main Avenue. Surrounded by restaurants and business services.

BUILDING FEATURES

Charming restored Victorian with several architectural features. Building can be leased complete or divided to accommodate tenant needs.

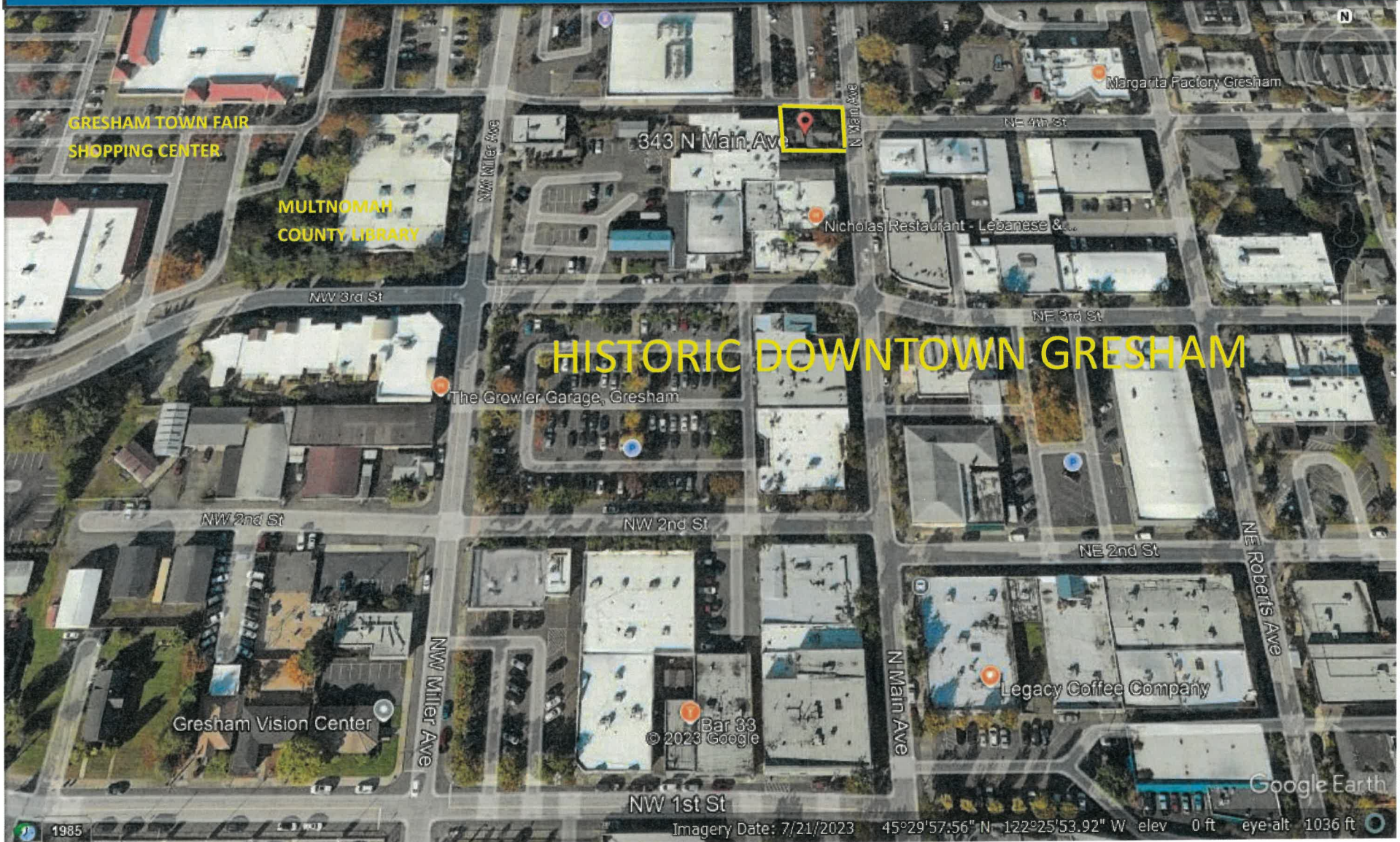
This information supplied herein is from sources we deem reliable. It is provided without any representation, warranty, or guarantee, expressed or implied as to its accuracy. Prospective Buyer or Tenant should conduct an independent investigation of all matters deemed to be material, including, but not limited

LEASE

SHATTUCK HOUSE

OFFICE/RETAIL

343 North Main Avenue. Gresham



This information supplied herein is from sources we deem reliable. It is provided without any representation, warranty, or guarantee, expressed or implied as to its accuracy. Prospective Buyer or Tenant should conduct an independent investigation of all matters deemed to be material, including, but not limited to, statements of income and expenses.

