

FOR LEASE

LYSKI PROFESSIONAL BUILDING

Office

1201 SE 223, Gresham, OR



FOR INFORMATION CONTACT:

Sue O'Halloran, Principal Broker; Martin Stone, CCIM

Email: Sue@KmoRealEstate.com; Martin@KmoRealEstate.com

503-661-8000

www.KmoRealEstate.com

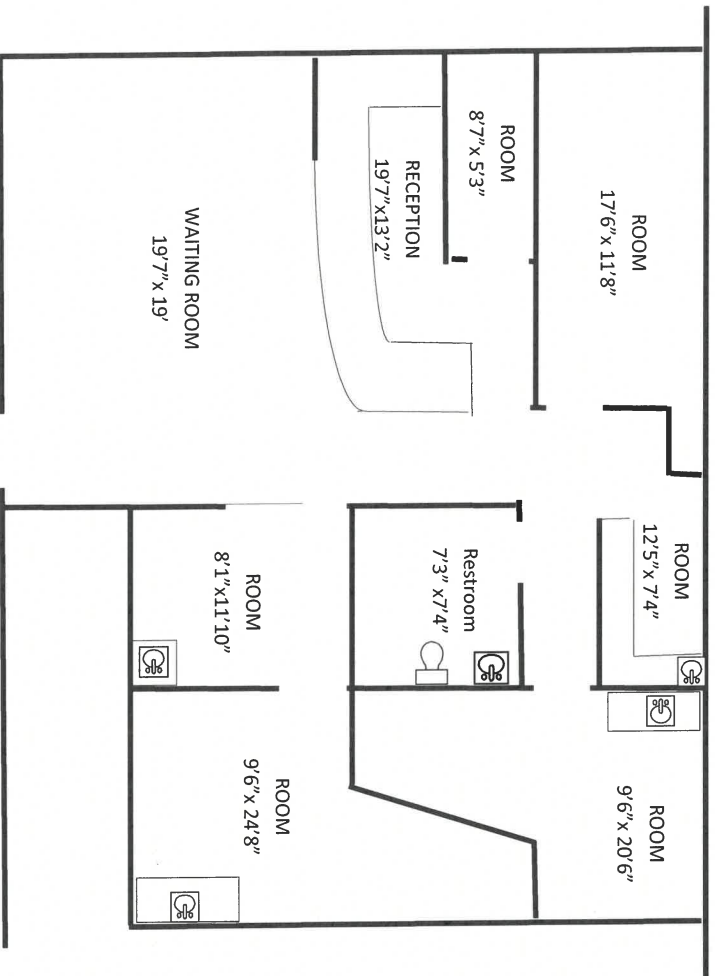


LYSKI PROFESSIONAL BUILDING

1201 SE 223RD Gresham, OR

Property Overview

CLASS A OFFICE SPACE	Available September 2024
BUILDING SQUARE FEET	18,012 SF
YEAR BUILT	2000
AVAILABLE SPACE ste. 160	1816 rentable sf
RENT	\$4539.55 month, Full Service
MINIMUM TERM	5 years
PARKING RATIO	4/1000
BUILDING ACCESS	ADA Accessible
CURRENT TENANTS	Blue Lake Oral Surgery CAD Advanced Dentistry Pediatric Dentistry Floyd Family Orthodontics Express Employment
BUILDING FEATURES	*High quality finishes throughout *Bright Entry with vaulted ceiling. *Join other professionals offering personal services.
LOCATION	High visibility on 223RD, Primary north south access between Downtown Gresham and I-84



This information supplied herein is from sources we deem reliable. It is provided without any representation, warranty, or guarantee, expressed or implied as to its accuracy. Prospective Buyer or Tenant should conduct an independent investigation of all matters deemed to be material, including, but not limited to, statements of income and expenses.



LEASE

LYSKI PROFESSIONAL BUILDING

OFFICE

1201 SE 223rd Avenue

Gresham, OR 97030



This information supplied herein is from sources we deem reliable. It is provided without any representation, warranty, or guarantee, expressed or implied as to its accuracy. Prospective Buyer or Tenant should conduct an independent investigation of all matters deemed to be material, including, but not limited to, statements of income and expenses.

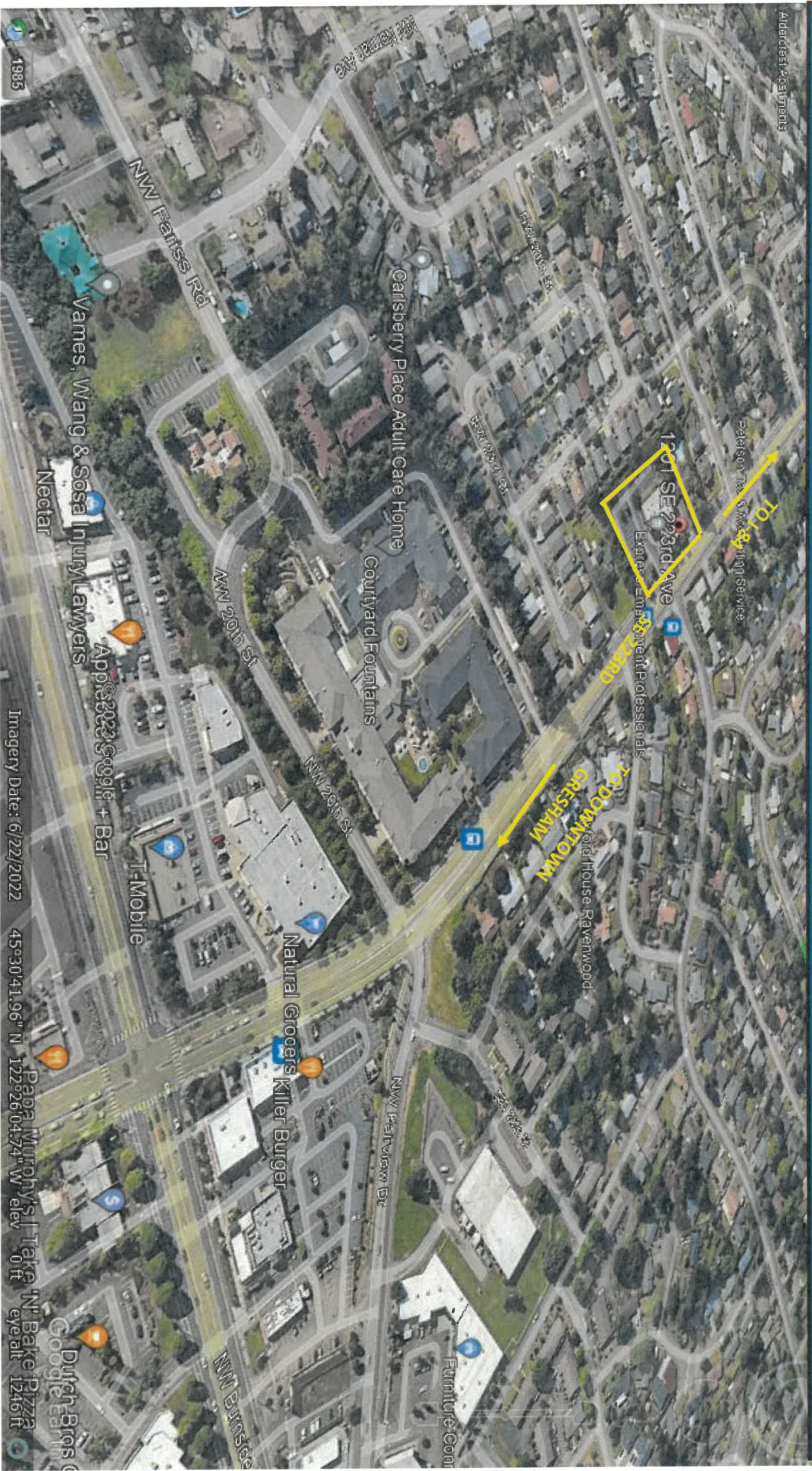


LEASE

LYSKI PROFESSIONAL BUILDING

OFFICE

1201 SE 223rd Avenue
Gresham, OR 97030



This information supplied herein is from sources we deem reliable. It is provided without any representation, warranty, or guarantee, expressed or implied as to its accuracy. Prospective Buyer or Tenant should conduct an independent investigation of all matters deemed to be material, including, but not limited to, statements of income and expenses.

