

FOR LEASE

SMITH CENTER

Office/Retail

17360 Smith Ave. Sandy OR



FOR INFORMATION CONTACT:

Sue O'Halloran, Principal Broker; Martin Stone, CCIM

Email: [Sue@KmoRealEstate.com](mailto:Sue@KmoRealEstate.com); [Martin@KmoRealEstate.com](mailto:Martin@KmoRealEstate.com)

503-661-8000

[WWW.KmoRealEstate.com](http://WWW.KmoRealEstate.com)

**KMO**  
KOHLMeyERS O'HALLORAN, INC.





## SMITH CENTER

17360 Smith Ave Sandy, OR

### Property Overview

RETAIL/OFFICE	Available NOW
SQUARE FEET	703
PRIOR USE	Office
ASKING RATE	\$ 10.00 PSF
NNN	\$ 6.75 PSF
TENANT IMPROVEMENT	
ALLOWANCE	Negotiable
MINIMUM TERM	3- 5 years
PARKING	On-Site
CURRENT TENANTS	La Razors Barber Shop, The Hair Works, Lovely Nails, Ant Farm Youth Hub

**LOCATION** Located on the corner of Smith Ave and Proctor Ave. West bound portion of US 26 through Sandy. Great visibility in the heart of the Historic Downtown. Sign monument signage available on Proctor.

This information supplied herein is from sources we deem reliable. It is provided without any representation, warranty, or guarantee, expressed or implied as to its accuracy. Prospective Buyer or Tenant should conduct an independent investigation of all matters deemed to be material, including, but not limited



LEASE

SMITH CENTER

OFFICE/ RETAIL

17360 Smith Avenue Sandy, OR



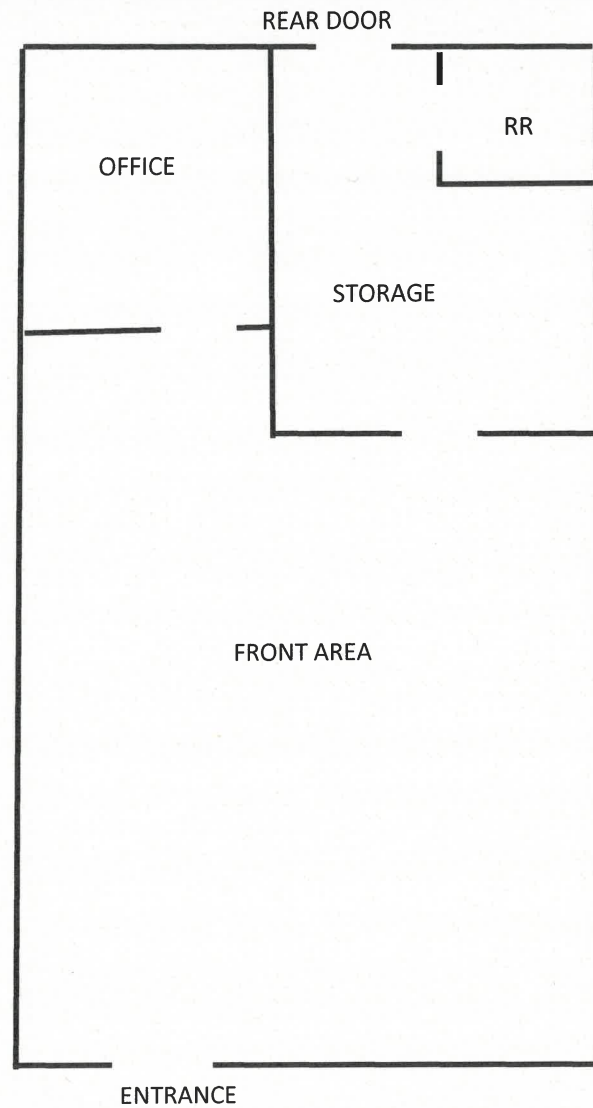
This information supplied herein is from sources we deem reliable. It is provided without any representation, warranty, or guarantee, expressed or implied as to its accuracy. Prospective Buyer or Tenant should conduct an independent investigation of all matters deemed to be material, including, but not limited to, statements of income and expenses.

LEASE

# SMITH CENTER

OFFICE/RETAIL

17360 Smith Avenue Sandy, OR



This information supplied herein is from sources we deem reliable. It is provided without any representation, warranty, or guarantee, expressed or implied as to its accuracy. Prospective Buyer or Tenant should conduct an independent investigation of all matters deemed to be material, including, but not limited to, statements of income and expenses.