

For Lease

66th Plaza

Office Space

Suite 202 - 500SF usable / 600SF rentable

3506 SE 66th Ave. Portland, OR 97206



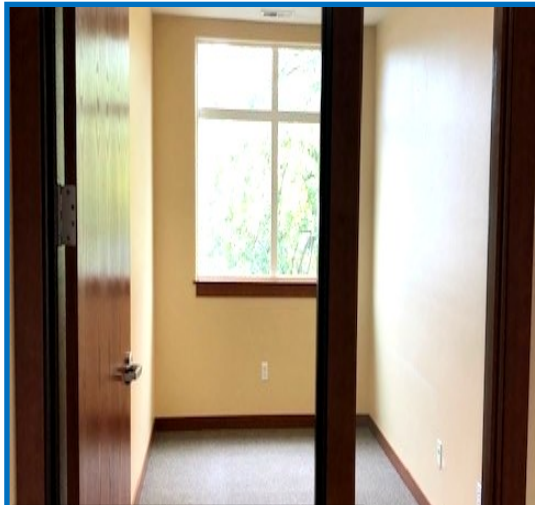
FOR INFORMATION CONTACT:

Sue O'Halloran, Principal Broker / Corinne O'Halloran, Broker/Property Manager 503-661-8000 Office

Sue@KmoRealEstate.com; Corinne@KmoRealEstate.com

503-819-2337 Corinne Cell

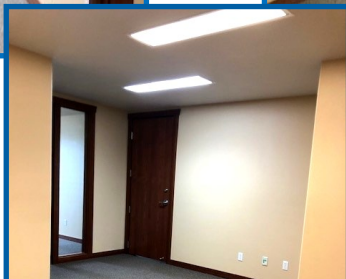




PRIVATE OFFICE 1



PRIVATE OFFICE 2



RECEPTION/WORKSPACE



66th Plaza

Suite 202

3506 SE 66th Ave. Portland, OR 97206

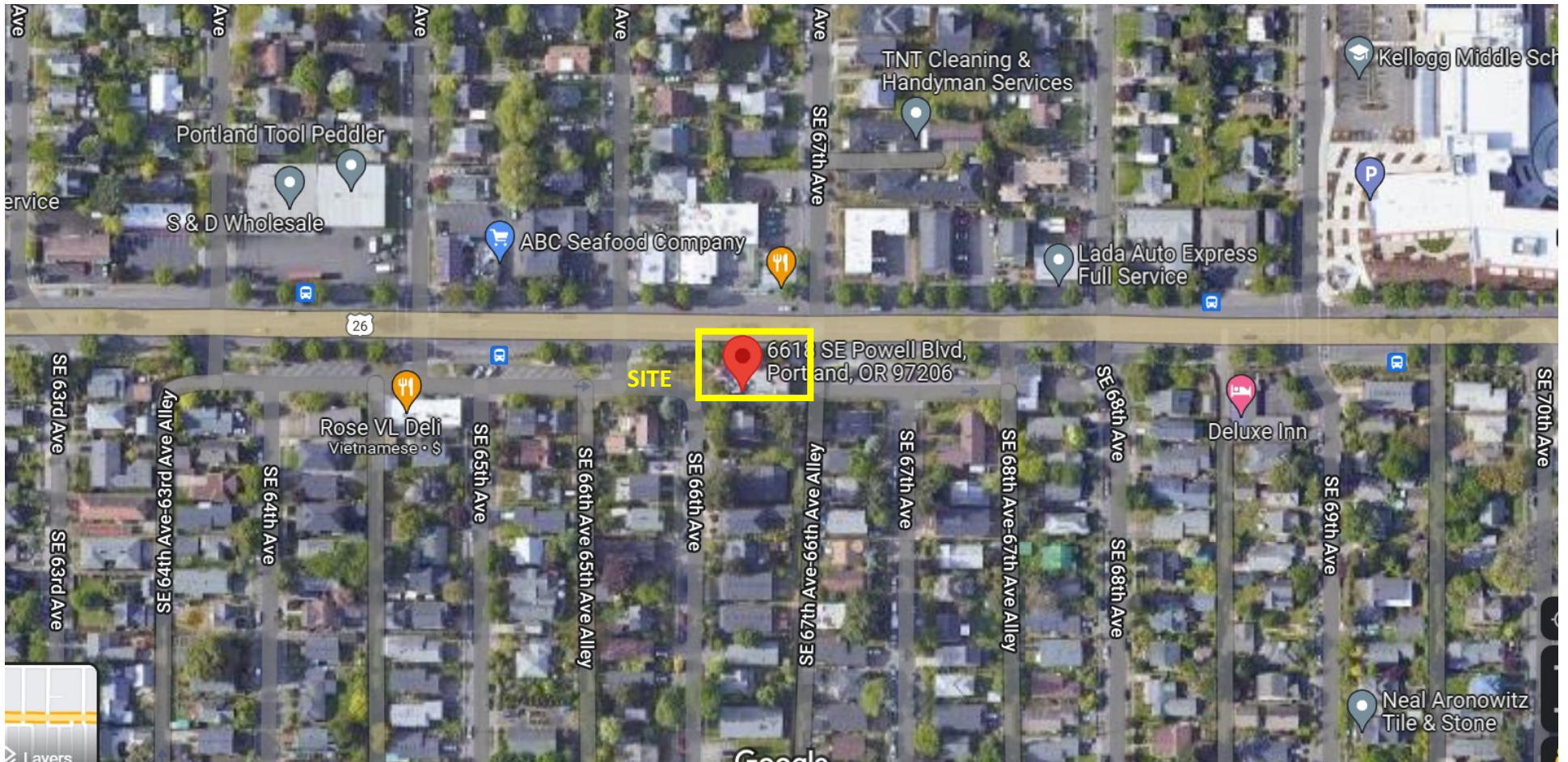
Property Overview

BUILDING SQUARE FEET	5910
YEAR BUILT	2002
AVAILABLE SPACE	500 SF usable 600 rentable
RATE	\$950/month Full Service
TENANT IMPROVEMENT ALLOWANCE	Negotiable
MINIMUM TERM	3 years
PARKING	Adjacent Public Lots
SITE LOCATION	3506 SE 66th Ave. Portland, OR 97206

This information supplied herein is from sources we deem reliable. It is provided without any representation, warranty, or guarantee, expressed or implied as to its accuracy. Prospective Buyer or Tenant should conduct an independent investigation of all matters deemed to be material, including, but not limited to, statements of income and expenses.

Office Space for Lease

3506 SE 66th Ave. Suite 202 - Portland, OR 97206



This information supplied herein is from sources we deem reliable. It is provided without any representation, warranty, or guarantee, expressed or implied as to its accuracy. Prospective Buyer or Tenant should conduct an independent investigation of all matters deemed to be material, including, but not limited to, statements of income and expenses.