

**LEASE**

**SANDY BUSINESS CENTER**  
**39085-39065 Pioneer Blvd. Sandy OR**

**Office**

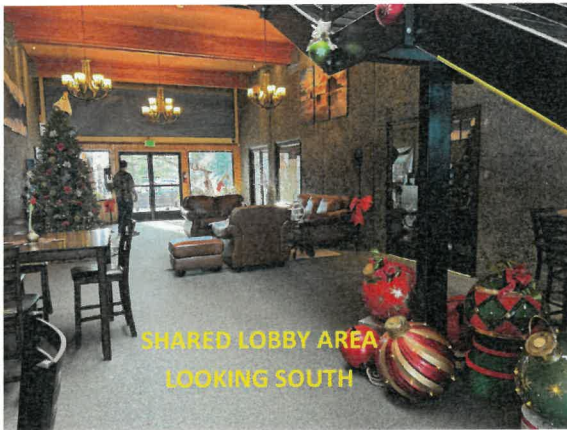


**FOR INFORMATION CONTACT:**

Colleen Hildebrand, Broker  
Cell: 971-288-9963  
Colleen@KMORealEstate.com

Martin Stone, CCIM  
503-661-8000  
Martin@KMORealEstate.com

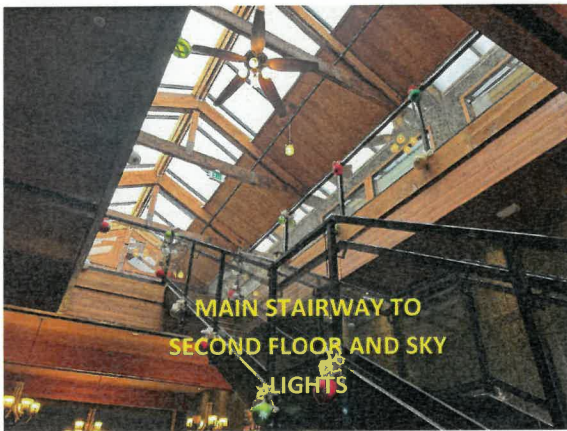




SHARED LOBBY AREA  
LOOKING SOUTH



SHARED LOBBY AREA  
LOOKING NORTH



MAIN STAIRWAY TO  
SECOND FLOOR AND SKY  
LIGHTS



SHARED CONFERENCE  
ROOM



SECOND FLOOR  
SHARED AREA



SECOND FLOOR  
SHARED AREA

## SANDY BUSINESS CENTER

39085 –39065 PIONEER BLVD. SANDY

SMALL QUALITY OFFICE SPACE

### Property Overview

BUILDING SQUARE FEET	22,339 SF	
YEAR BUILT	1976 Remodeled	
AVAILABLE SPACE		
SUITE 204	750 SF	\$850.00
SUITE 1015	155 SF	\$375.00
SUITE 1020M	150 SF	LEASED
SUITE 1008M	120 SF	LEASED
	FULL SERVICE	

TENANT IMPROVEMENT ALLOWANCE	NEGOTIABLE
MINIMUM TERM	2 Years
PARKING	Public lot / Street /Private lot
AMENITIES	Large atrium common area with skylight and coffee bar, sitting areas, fully airconditioned building, back-up generator. Shared conference room. Internet to premises.

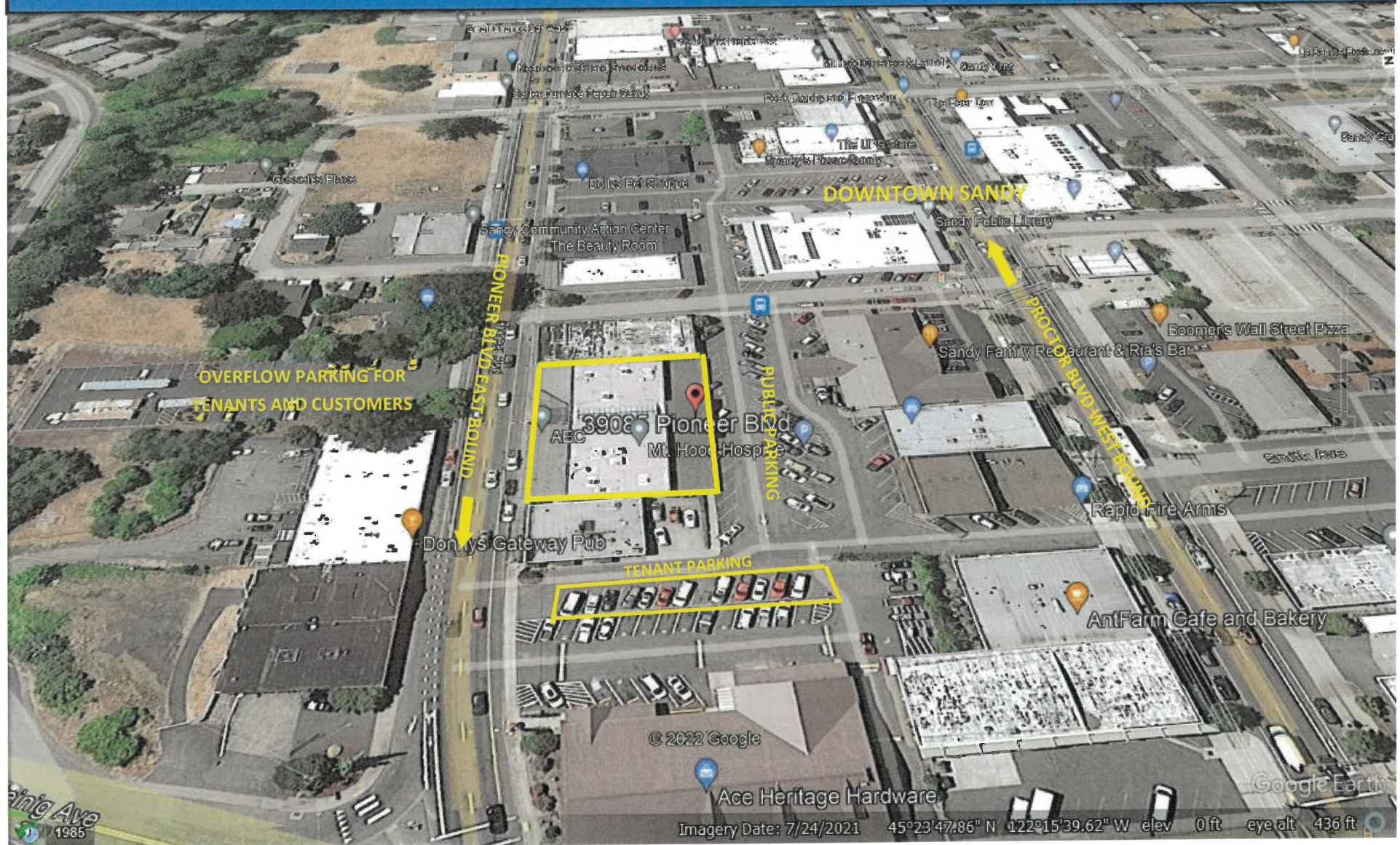
CURRENT TENANTS	AEC ,David Symes Business Attorney Focused Financial Kardia Construction Kingdom Builders Mt Hood Environmental Mt Hood Hospice River Ridge Counseling Sandy Chamber of Commerce Faize Healing AND Ant Farm
-----------------	---

This information supplied herein is from sources we deem reliable. It is provided without any representation, warranty, or guarantee, expressed or implied as to its accuracy. Prospective Buyer or Tenant should conduct an independent investigation of all matters deemed to be material, including, but not limited to, statements of income and expenses.

LEASE

# SANDY BUSINESS CENTER

Office/Retail

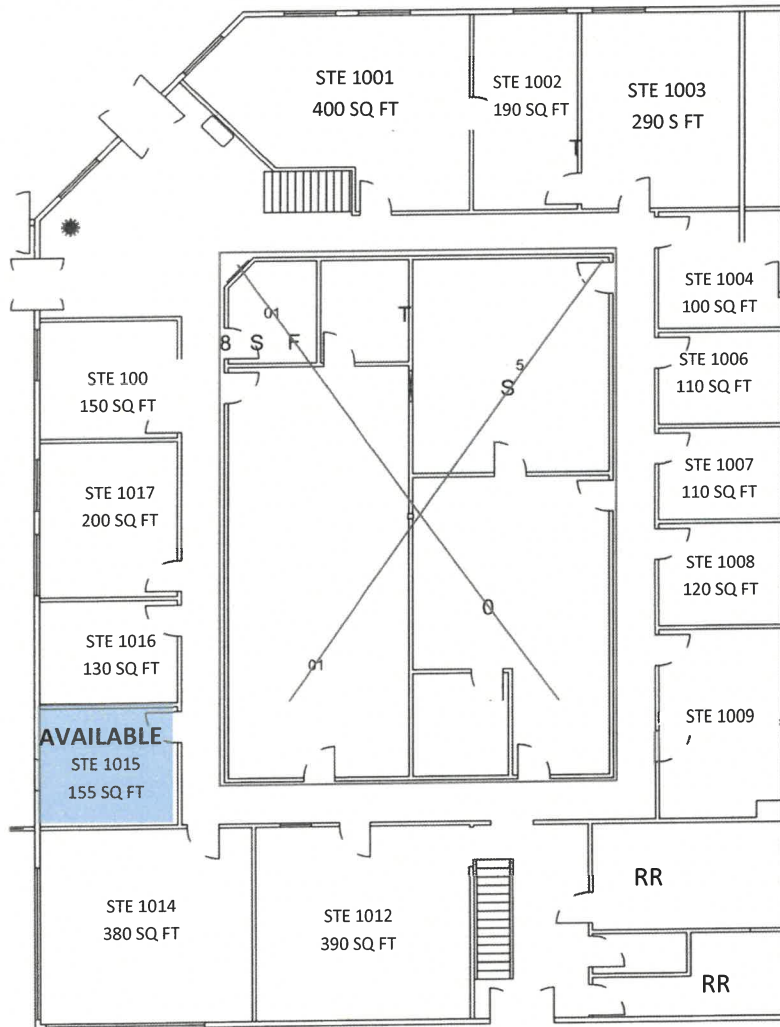


This information supplied herein is from sources we deem reliable. It is provided without any representation, warranty, or guarantee, expressed or implied as to its accuracy. Prospective Buyer or Tenant should conduct an independent investigation of all matters deemed to be material, including, but not limited to, statements of income and expenses.

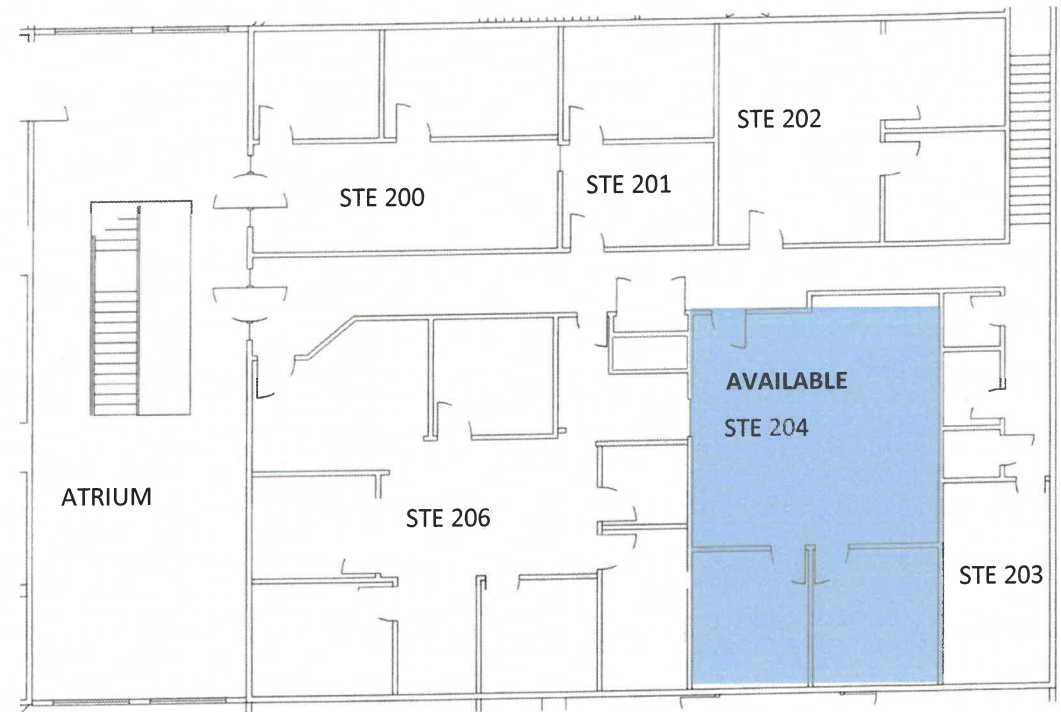
LEASE

**SANDY BUSINESS CENTER**  
**39085 PIONEER BLVD. SANDY, OR**  
EAST BUILDING

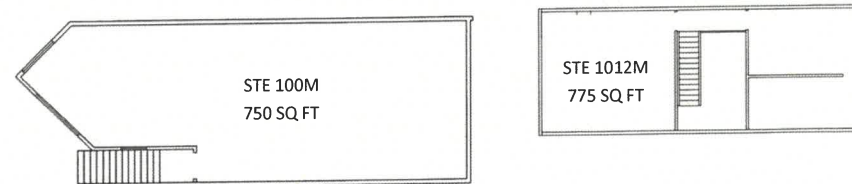
OFFICE/RETAIL



MAIN FLOOR



UPPER FLOOR



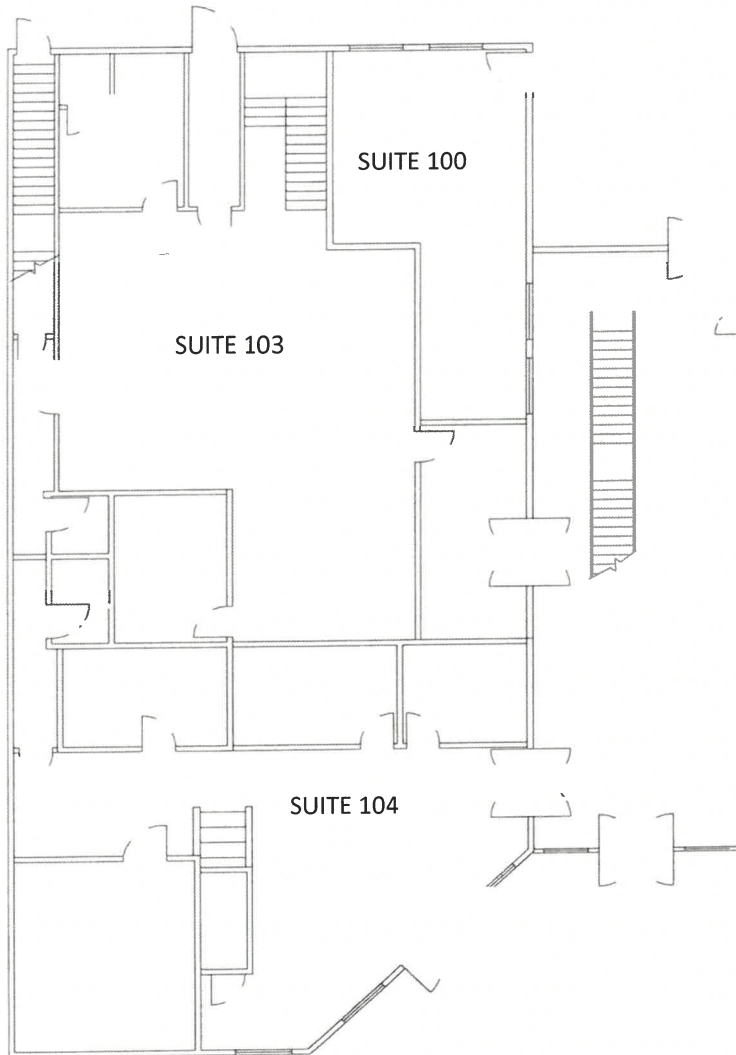
MEZZANINE LEVEL

This information supplied herein is from sources we deem reliable. It is provided without any representation, warranty, or guarantee, expressed or implied as to its accuracy. Prospective Buyer or Tenant should conduct an independent investigation of all matters deemed to be material, including, but not limited to, statements of income and expenses.

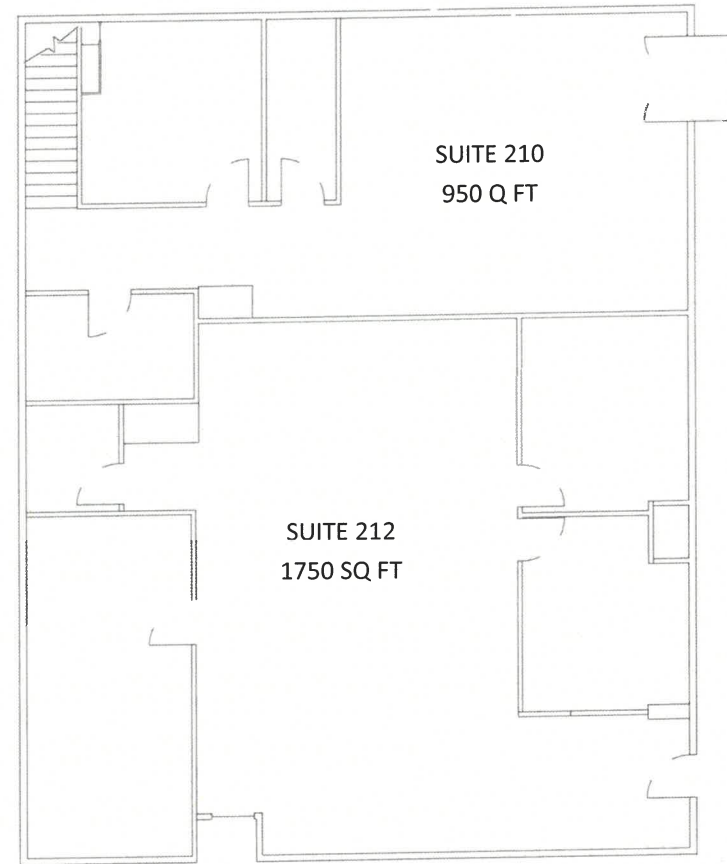
LEASE

**SANDY BUSINESS CENTER**  
**39065 PIONEER BLVD SANDY OR. 97055**  
**WEST BUILDING**

OFFICE/RETAIL



MAIN LEVEL



UPPER FLOOR

This information supplied herein is from sources we deem reliable. It is provided without any representation, warranty, or guarantee, expressed or implied as to its accuracy. Prospective Buyer or Tenant should conduct an independent investigation of all matters deemed to be material, including, but not limited to, statements of income and expenses.